

GA-AA-C Standard Rivet

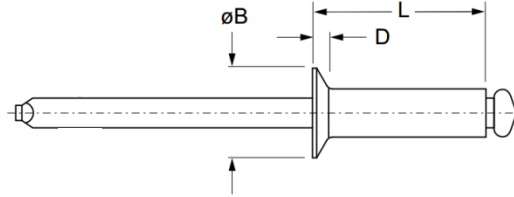
Countersunk head · Aluminium body · Aluminium stem
2.4 mm (3/32") - 6.4 mm (1/4")

Features

- Non-structural blind breakstem rivet designed for a wide range of applications
- Cost effective standard rivet
- Installs quickly and easily
- Coloured / painted options available on request

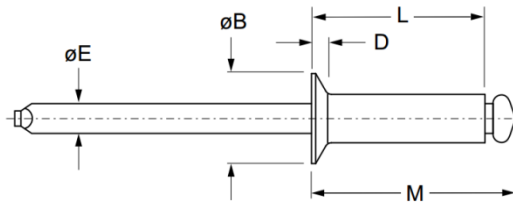
Material

- Body: Aluminium alloy 5052
- Stem: Aluminium alloy



IFI Convention

Part No.	Size ø	Grip Range		Hole Size		L max.	øB	D	Shear (typical) kN	Tension (typical) kN							
		nom.	min.	max.	min.						max.						
GA-AA-32C	2.4 (3/32")	0.5	3.2	2.46	2.54	6.4	4.52 ~ 5.03	0.81	0.31	0.36							
GA-AA-34C		3.2	6.4			9.5											
GA-AA-36C		6.4	9.6			12.7											
GA-AA-41C	3.2 (1/8")	0.5	1.6	3.28	3.38	5.4	6.05 ~ 6.65	1.02	0.53	0.67							
GA-AA-42C		1.6	3.2			7.0											
GA-AA-43C		3.2	4.8			8.6											
GA-AA-44C		4.8	6.4			10.2											
GA-AA-45C		6.4	8.0			11.7											
GA-AA-46C		8.0	9.6			13.3											
GA-AA-48C		9.6	12.7			16.5											
GA-AA-410C		12.7	15.9			19.7											
GA-AA-412C		15.9	19.1			22.9											
GA-AA-52C		4.0 (5/32")	0.5			3.2					4.06	4.17	7.6	7.52 ~ 8.33	1.27	0.85	1.02
GA-AA-53C	3.2		4.8	9.2													
GA-AA-54C	4.8		6.4	10.8													
GA-AA-55C	6.4		8.0	12.4													
GA-AA-56C	8.0		9.6	14.0													
GA-AA-58C	9.6		12.7	17.1													
GA-AA-510C	12.7		15.9	20.3													
GA-AA-512C	15.9		19.1	23.5													
GA-AA-62C	4.8 (3/16")		0.5	3.2	4.88	4.98	8.3	9.04 ~ 10.03	1.52	1.16			1.42				
GA-AA-63C			3.2	4.8			9.8										
GA-AA-64C		4.8	6.4	11.4													
GA-AA-65C		6.4	8.0	13.0													
GA-AA-66C		8.0	9.6	14.6													
GA-AA-68C		9.6	12.7	17.8													
GA-AA-610C		12.7	15.9	21.0													
GA-AA-612C		15.9	19.1	24.1													
GA-AA-614C		19.1	22.2	27.3													
GA-AA-616C		22.3	25.4	30.5													
GA-AA-82C	6.4 (1/4")	0.5	3.2	6.53	6.63	9.5	12.07 ~ 13.34	2.03	2.05	2.49							
GA-AA-84C		3.2	6.4			12.7											
GA-AA-86C		6.4	9.6			15.9											
GA-AA-88C		9.6	12.7			19.1											
GA-AA-810C		12.7	15.9			22.2											
GA-AA-812C		15.9	19.1			25.4											
GA-AA-814C		19.1	22.2			28.6											
GA-AA-816C		22.3	25.4			31.8											



DIN Convention

Part No.	Size ø	Grip Range		Hole Size		L max.	øB -	D -	Shear (typical) kN	Tension (typical) kN
		min.	max.	min.	max.					
GA-AA-2406C	2.4 (3/32")	0.5	3.0	2.5	2.6	6	4.3 ~ 5.0	0.8	0.30	0.35
GA-AA-2408C		3.0	5.0			8				
GA-AA-2409C		4.0	6.0			9				
GA-AA-2412C		6.0	9.0			12				
GA-AA-3205C	3.2 (1/8")	0.5	2.0	3.3	3.4	5	5.8 ~ 6.5	1.2	0.54	0.65
GA-AA-3206C		1.0	3.0			6				
GA-AA-3207C		2.0	4.0			7				
GA-AA-3208C		3.0	5.0			8				
GA-AA-3209C		4.0	6.0			9				
GA-AA-3210C		5.0	7.0			10				
GA-AA-3212C		7.0	9.0			12				
GA-AA-3214C		9.0	11.0			14				
GA-AA-3216C		11.0	13.0			16				
GA-AA-3218C		13.0	15.0			18				
GA-AA-3220C	15.0	17.0	20							
GA-AA-3225C	17.0	22.0	25							
GA-AA-4006C	4.0 (5/32")	0.5	2.0	4.1	4.2	6	7.0 ~ 8.0	1.5	0.85	1.02
GA-AA-4008C		2.0	4.0			8				
GA-AA-4010C		4.0	6.0			10				
GA-AA-4012C		6.0	8.0			12				
GA-AA-4014C		8.0	10.0			14				
GA-AA-4016C		10.0	12.0			16				
GA-AA-4018C		12.0	14.0			18				
GA-AA-4020C		14.0	16.0			20				
GA-AA-4025C		16.0	21.0			25				
GA-AA-4806C		4.8 (3/16")	0.5			1.5				
GA-AA-4808C	1.5		3.5	8						
GA-AA-4810C	3.5		5.5	10						
GA-AA-4812C	5.5		7.5	12						
GA-AA-4814C	7.5		9.5	14						
GA-AA-4816C	9.5		11.5	16						
GA-AA-4818C	11.5		13.5	18						
GA-AA-4820C	13.5		15.5	20						
GA-AA-4825C	15.5		20.5	25						
GA-AA-4830C	20.5		25.5	30						
GA-AA-6412C	6.4 (1/4")	3.0	6.0	6.5	6.6	12	11.5 ~ 13.0	2.2	2.05	2.50
GA-AA-6416C		6.0	10.0			16				
GA-AA-6418C		10.0	12.0			18				
GA-AA-6421C		12.0	15.0			21				
GA-AA-6425C		15.0	19.0			25				



Can't find what you are looking for?

We can provide customized finishing and colouring.
Contact your nearest [Gripwell](http://www.gripwell.com.sg) team for assistance!